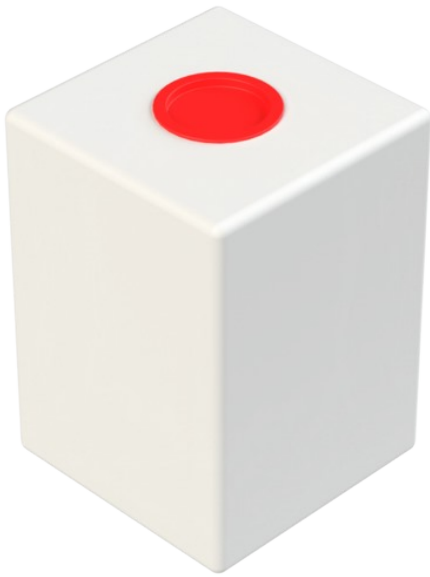


Laboratory canister 20 L

Art.nr: 20-10



Approximate size

Specifications	
Color	Natural
Volume (L)	20
Length (mm)	250
Width (mm)	250
Height (mm)	350
Weight (kg)	2

Characteristics



Recyclable



Wide temperature range



Chemical resistance



Leak test



Logistics solutions

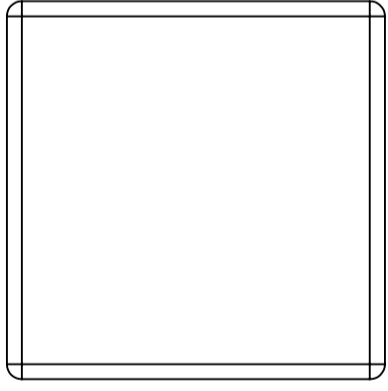


Suitable for food contact

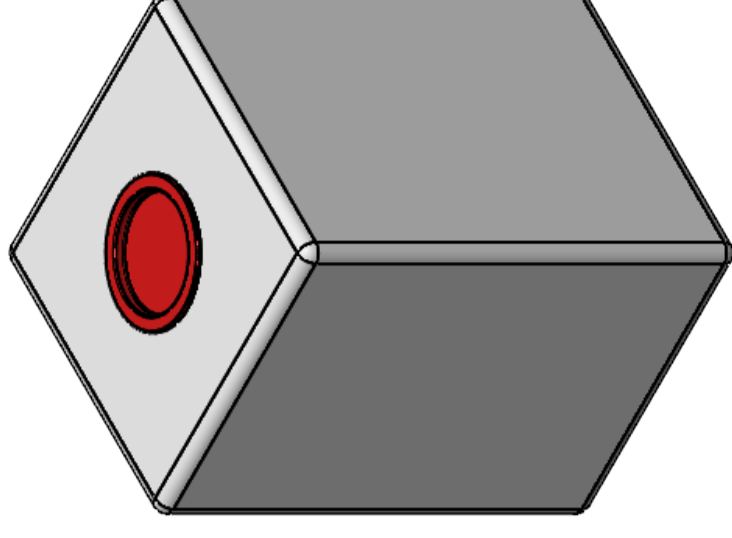
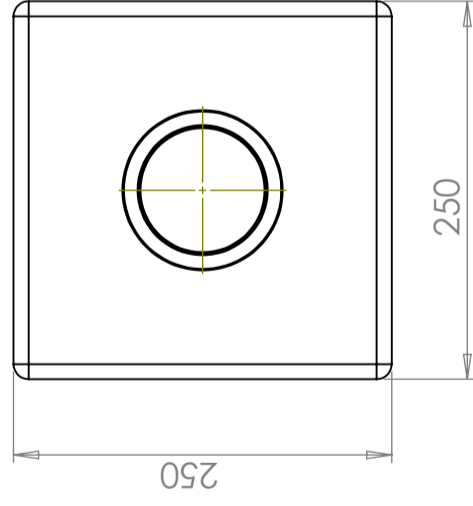
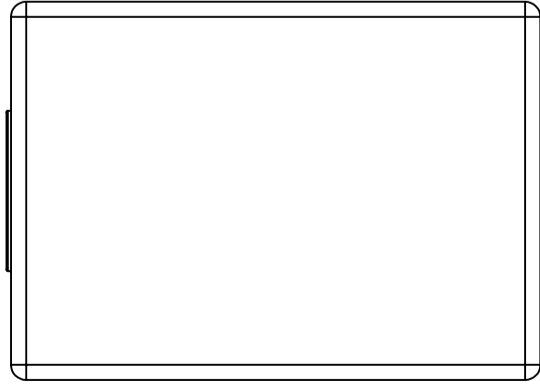
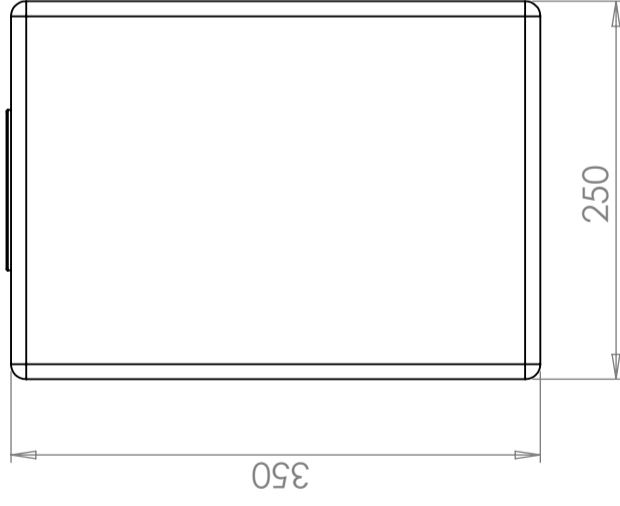
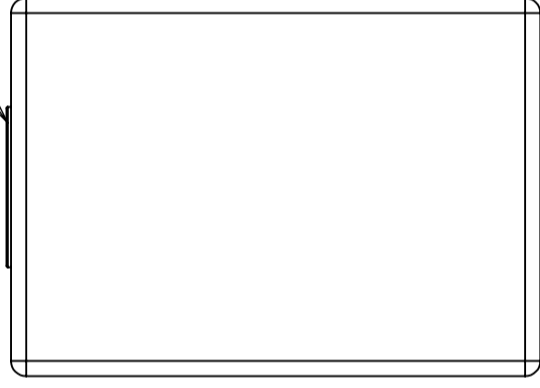


Easy to clean

Revision		
REV.	Ändringsmeddelande	Datum
		Godkänd



D90 snap lid



Konstruerad av	Granskad av	Godkänd av - datum	Generell tolerans SS-ISO 2768-1	Generell Ytjämnhet, Ra	Vyplacering	Skala
		-				1:5
Titel/Benämning						
CPX Behållare 20L rektangulär						
Ritningsnummer						
20102						
Utgåva						Blad
A						1(1)



Ägare