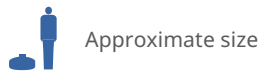
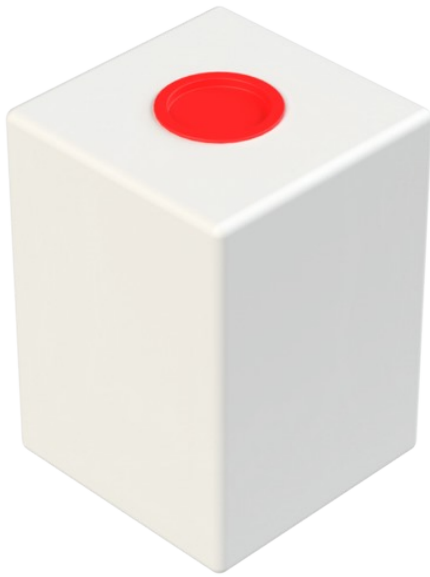


Laboratory canister 20 L

Art.nr: 20-10



| Specifications | |
|----------------|---------|
| Color | Natural |
| Volume (L) | 20 |
| Length (mm) | 250 |
| Width (mm) | 250 |
| Height (mm) | 350 |

Characteristics



Recyclable



Wide temperature range



Chemical resistance



Leak test



Logistics solutions

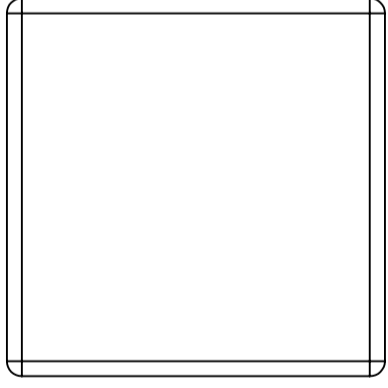


Suitable for food contact

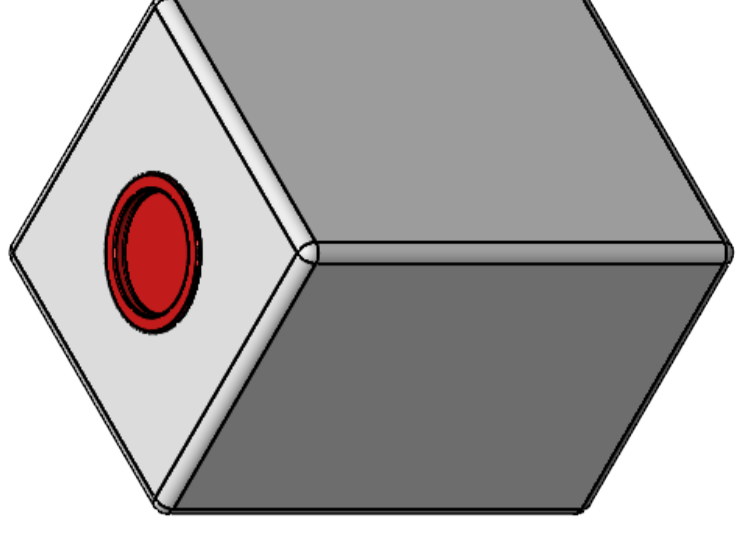
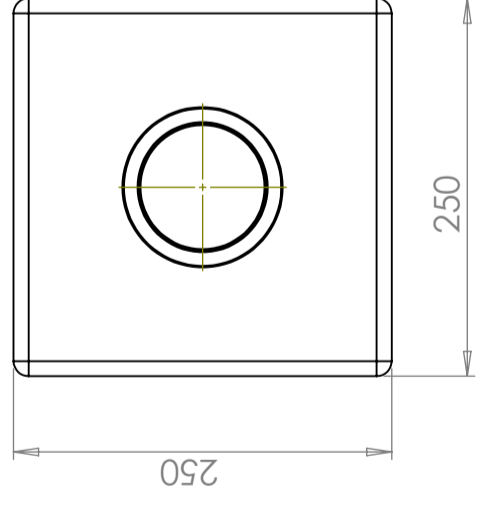
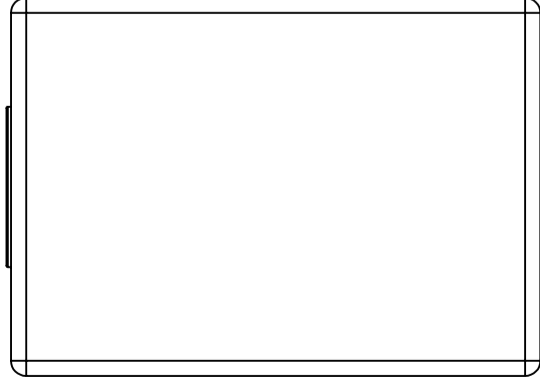
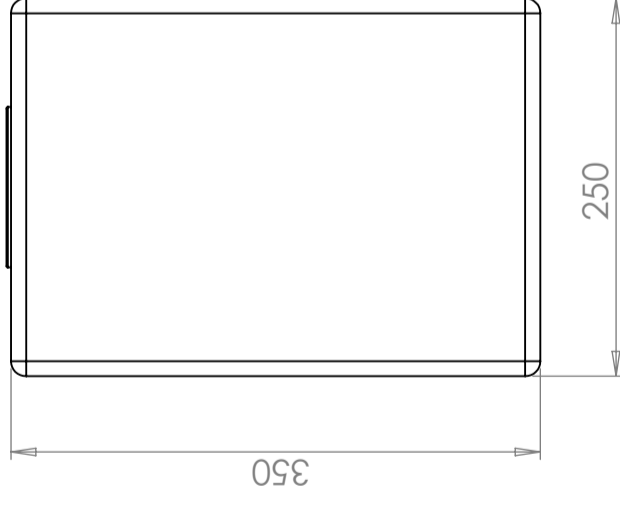
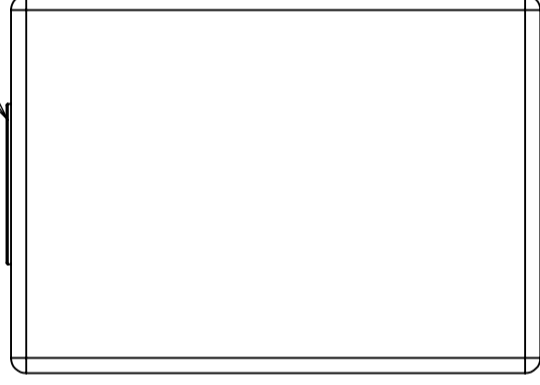
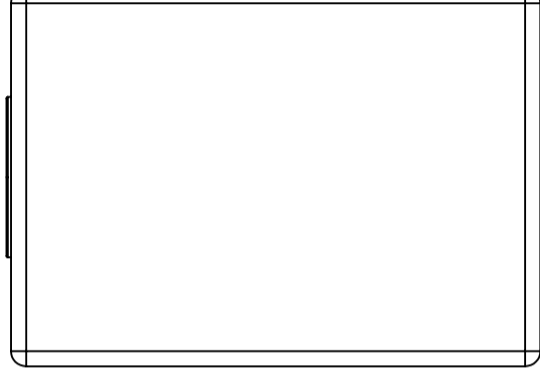


Easy to clean

| | | |
|----------|--------------------|---------|
| Revision | | |
| REV. | Ändringsmeddelande | Datum |
| | | Godkänd |



D90 snap lid



| | | | | | | |
|---|-------------|--------------------|------------------------------------|---------------------------|-------------|-------|
| Konstruerad av | Granskad av | Godkänd av - datum | Generell tolerans SS-ISO 2768-1 | Generell Ytjämnhet, Ra | Vyplacering | Skala |
| | | - | | | | 1:5 |
| Titel/Benämning CPX Behållare 20L rektangulär | | | | | | |
| Ägare | | | | | | |
| Ritningsnummer 20102 | | | | | | |
| Utgåva | | | | | | A |
| Blad | | | | | | 1(1) |